



TANDEM
SET & SCENERY

Who are we? - Tandem Set and Scenery



Tandem Set & Scenery is a fully integrated experiential entertainment company that designs, builds, and operates in-person experiences. We are storytellers and worldbuilders, obsessed with the customer experience and providing guests real agency.

Deep & Relevant Experience: over 15 years of writing, designing, building and producing experiences. Developed proprietary and third-party experiences for other operators, studios, the theatre industry, and corporate activations. Clients include Warner Brothers, Secret Cinema, Amazon, Netflix, HBO, Time Run, Sherlock The Official Live Game, the BBC, and the London Olympics.

History of Innovation: with the rare holistic combination of creative, build and production experience, we set out to build a better immersive mouse trap, creating a platform based on multi-format inputs and trails and developing our own show-tech.

Results: We have produced and operated #1 experience on Fever globally, the top rated immersive attraction in London, and shipped and delivered full experiences around the world.

Our speciality is creating highly engaging, gamified experiences powered by technology



IMMERSIVE EXPERIENCES

Phantom Peak - London



Designed, built and operated a vast open-world immersive experience in central London

Phantom Peak - London



Turned an abandoned car-park into a western town featuring lakes and canals

Phantom Peak - London



Built man-made waterways within a faux-Western town

Phantom Peak - London



Transformed a vast warehouse into an old western mining town

Phantom Peak - London



Built bars and restaurants - fully themed and in-world

Alcotraz - Multiple Locations



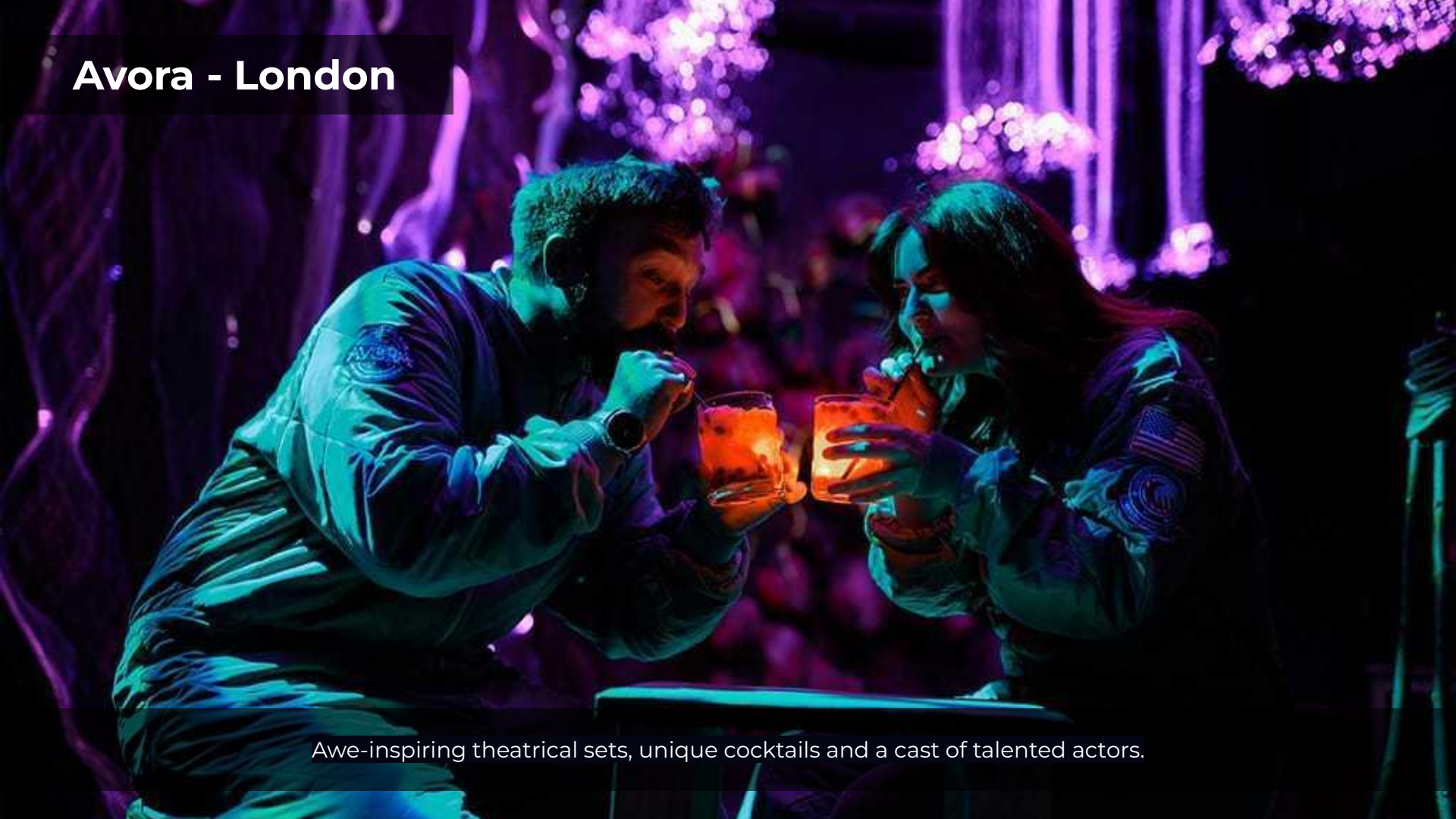
A fully themed prison experience, framed around F&B

Alcotraz - Multiple Locations



A fully themed prison experience, framed around F&B

Avora - London

A man and a woman in white astronaut suits are seated at a table in a futuristic bar. They are both holding and drinking from orange cocktails. The man's suit has a NASA patch on the sleeve, and the woman's suit has an American flag patch. The background is dark with vibrant purple and blue bokeh lights, creating a sci-fi atmosphere.

Awe-inspiring theatrical sets, unique cocktails and a cast of talented actors.

Arcanist Tavern - London

The image captures the interior of the Arcanist Tavern, a board game cafe and bar in London. The room is characterized by dark wood paneling on the walls and ceiling, creating a cozy and atmospheric setting. In the foreground, a group of people is seated around a wooden table, engaged in a board game. The table is cluttered with game pieces, cards, and glasses of drinks. A woman with long dark hair and glasses is seen from the back, looking towards the game. To her right, a man in a light blue shirt is smiling and looking at the game. In the background, other patrons are seated at tables, some playing games and others talking. The lighting is warm and focused on the tables, highlighting the social and gaming atmosphere of the venue.

An immersive Board Game Cafe and Bar

Alice Underground - London



Award-winning Alice-In-Wonderland experience, which entertained 100s of thousands of visitors

The background image is a dark, atmospheric scene from a game. It features ancient Greek architecture with several columns and a central glowing cube. The lighting is dim, with a warm, orange glow emanating from the cube and some floor lights. The overall mood is mysterious and ancient.

GAME EXPERIENCES

Time Run: The Lance of Longinus - London



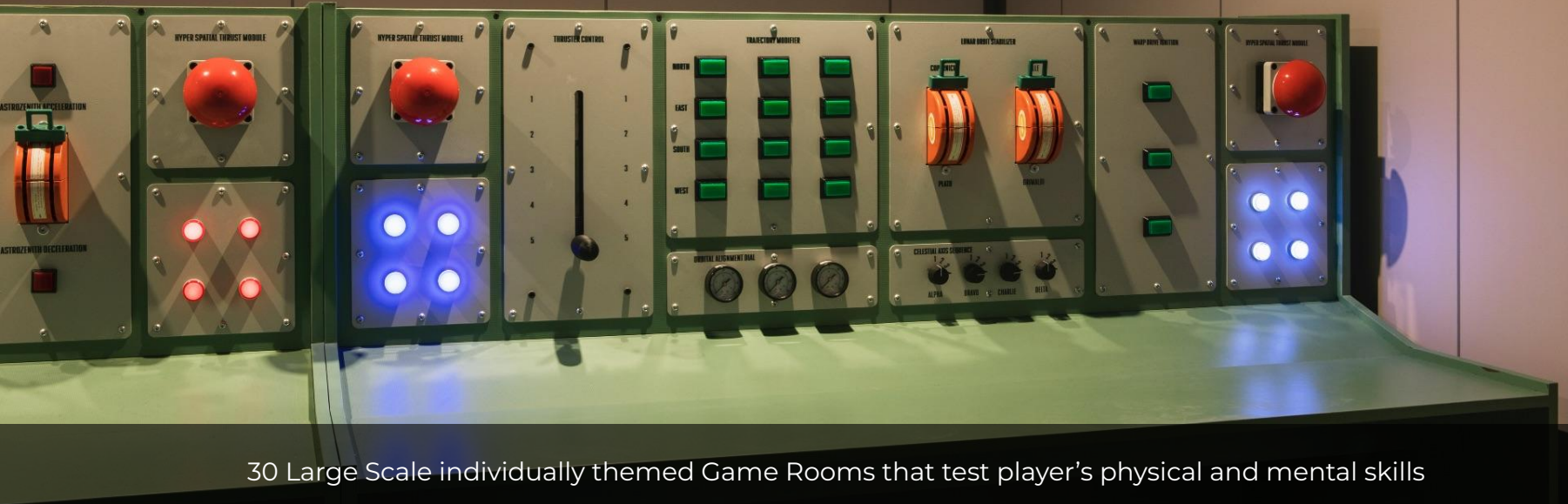
"London's greatest Immersive Experience" - Great Little Place, London

The Celestial Chain

A futuristic, blue-lit corridor with a central glowing circular opening and a control panel on the right. The scene is set in a dark, industrial environment with a prominent blue color palette. The central feature is a circular opening with two vertical bars of light. To the right, a control panel is visible with the text 'THREATS CONTROL' and 'CONTROL'. The ceiling has a grid of circular lights, and the walls are textured and metallic.

“The Greatest Live Game London has ever seen” - Great Little Place, London

Enigma Quest Escape Arcade



30 Large Scale individually themed Game Rooms that test player's physical and mental skills

Enigma Quest Escape Arcade



30 Large Scale individually themed Game Rooms that test player's physical and mental skills

Enigma Quest Escape Arcade



30 Large Scale individually themed Game Rooms that test player's physical and mental skills

Enigma Quest Escape Arcade



WHISPERING
WOODS



DESCRIPTION:

A skill often underestimated, you will especially need it in this neck of the woods. Listen carefully to the sounds of this forest, find and press the right symbols. The more you identify, the higher your score!

GAME TYPE:

SIGHT



KNOWLEDGE



TOUCH



HEARING

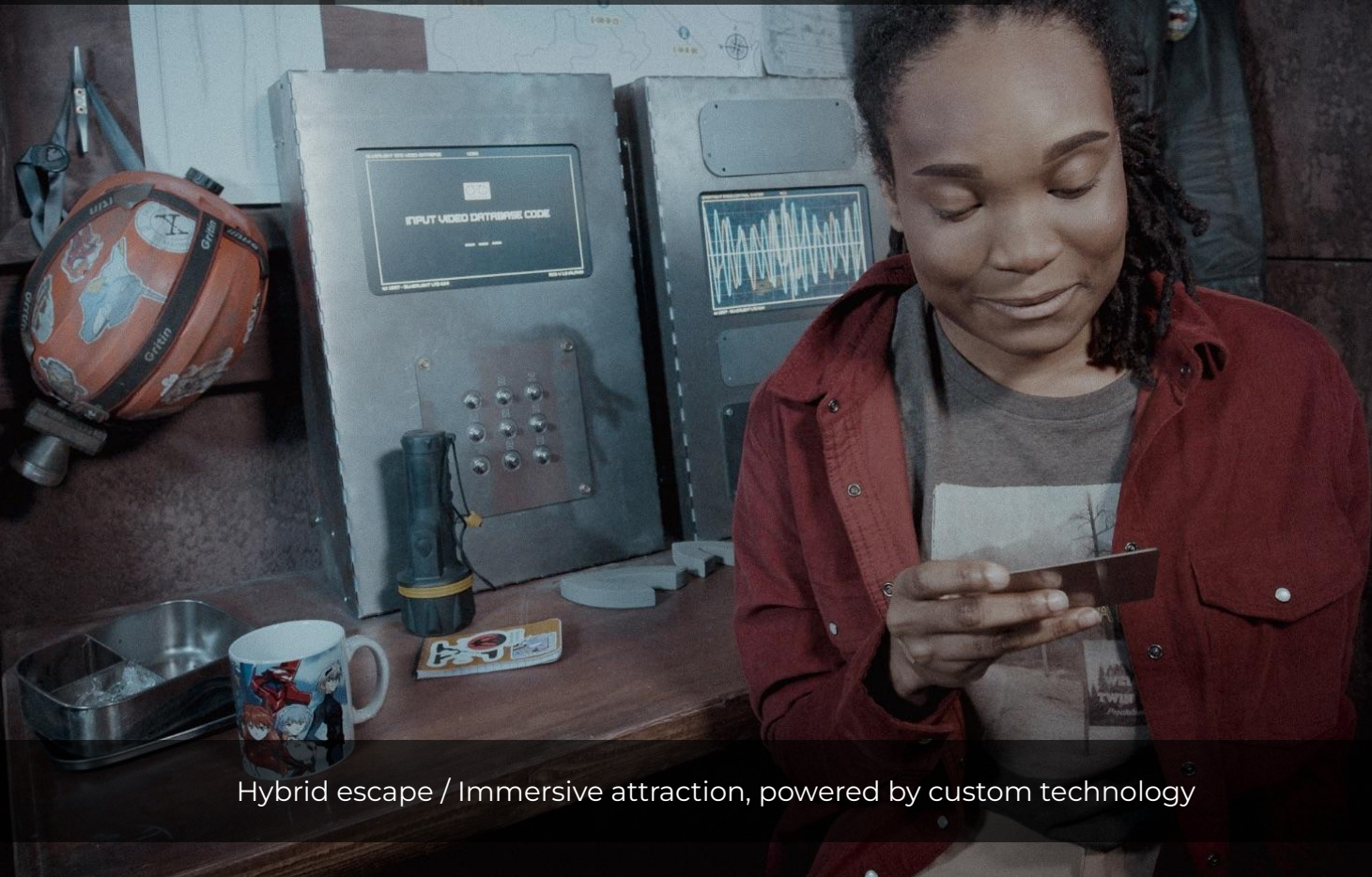


PUZZLE



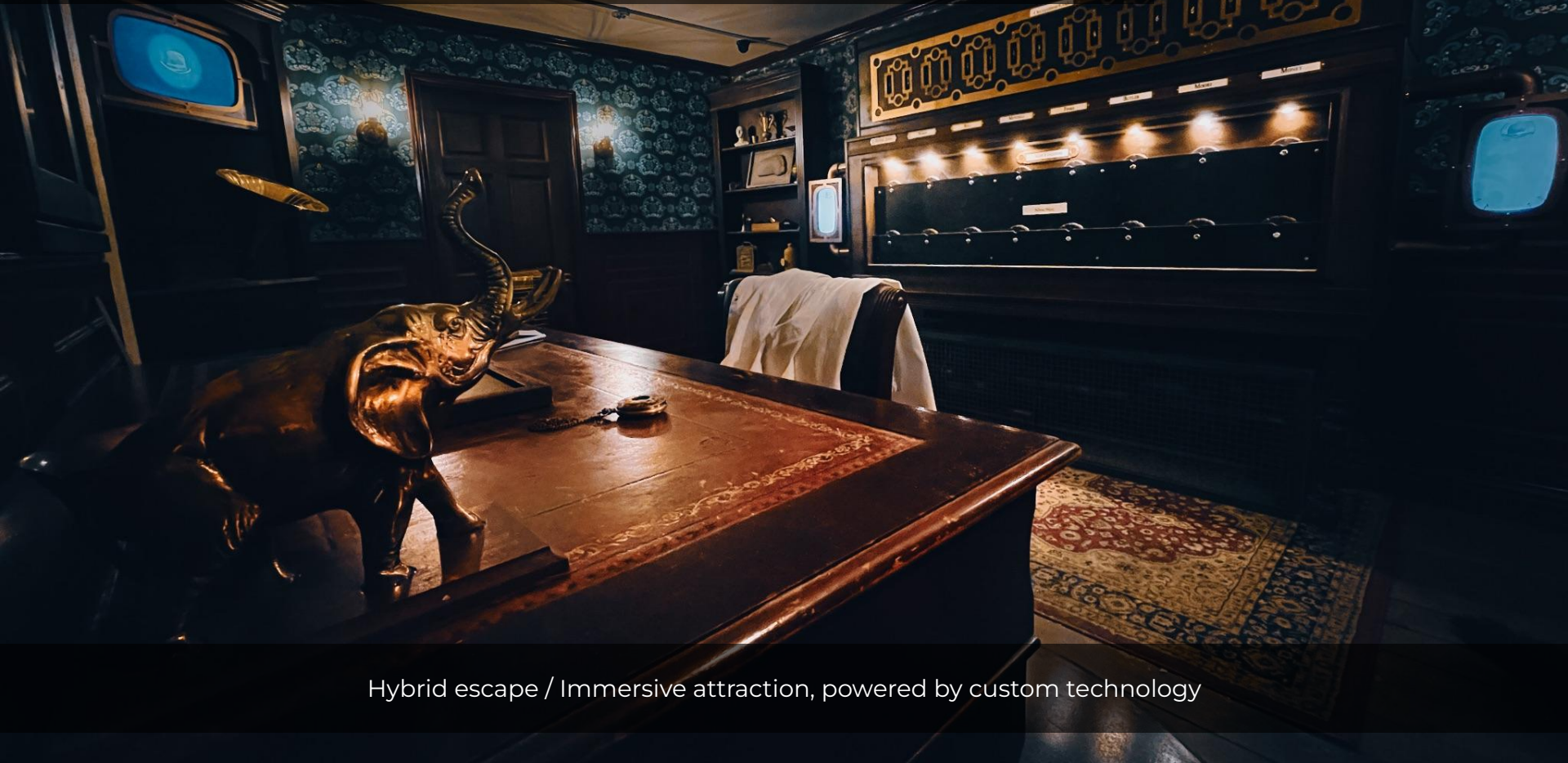
30 Large Scale individually themed Game Rooms that test player's physical and mental skills

The Tomb of the Fallen King - Billericay



Hybrid escape / Immersive attraction, powered by custom technology

Hackers: Blood over Baker Street - Billericay



Hybrid escape / Immersive attraction, powered by custom technology

Tower of Sorcery - Billericay



Hybrid escape / Immersive attraction, powered by custom technology

Sherlock: The Game is Now - London



Award-winning live experience based on the BBC Series

The background image shows a dimly lit, ancient-style interior. It features several large, dark stone columns supporting a ceiling. The walls are covered in intricate carvings and reliefs. In the center, there is a large, ornate stone structure, possibly a sarcophagus or a ceremonial altar, with a glowing circular emblem on its front. The floor is dark, and there are faint, glowing lines of light on it, suggesting a modern or futuristic setting. The overall mood is mysterious and historical.

BRAND ACTIVATIONS & POP UPS

Just Eat x Netflix - Squid Game 2: The Rave Pop Up



Pop Up Just Eat Vendor at "Squid Game 2: The Rave" at Drumsheds, London

Amazon Prime x Twitch: Storm the Stream

RESCUE WITHOUT REMORSE

LIVE

LIVE GAMING EXPERIENCE

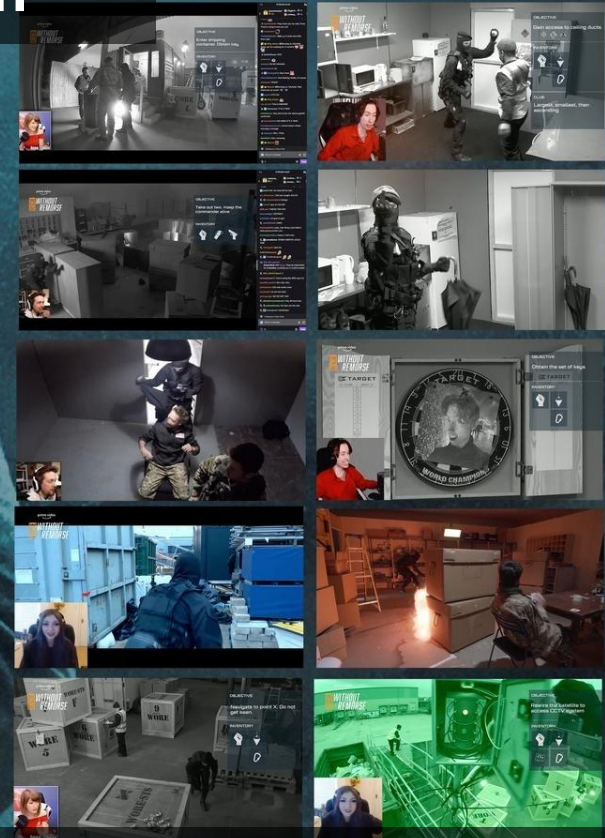
To launch the new Amazon Original film 'WITHOUT REMORSE' we turned to gaming to create a groundbreaking world's first real-life gaming experience played out LIVE on Twitch.

Recruiting four streamers and their communities, over an action packed 2hr live stream, they took direct control of our action hero 'Tom' live.

Their mission, rescue the hostage.

Conferring with each other and their communities, they solved clues, avoided gunfire, threw smoke grenades, raided the bad guy's fridge, stole hats, killed with cake, danced and absailed... Without Remorse.

With live & unrehearsed action, live filming, live editing, live SFX and live graphics - All at the behest of the Twitch community - What could go wrong?



Webby Award-winning streaming experience



Netflix x Twitch: Race For The Cube

CRIMSONS
"CRIMSONS UNITE!"
JOIN ME
@TRILLUXE

ATLANTIANS
"TAKE BACK THE CUBE."
JOIN ME
@GEENELLY

ORIGINES
"ONE TRIBE ONE DESTINY."
JOIN ME
@MANDZIO

RACE FOR THE CUBE
PLAY SUNDAY
5PM CET / 4PM GMT
LIVE ON **twitch**
NETFLIX

Award nominated, watched by millions globally

Heineken Silver Launch Event - London



A metaverse themed cocktail bar, where every element was pixelated

Kraken Rum Screamefest: The Directors Cut - London



Directed by Neil Marshall, a world first 18 certificated Halloween Scare Maze

Kraken Rum Screamefest: A Perfect Storm Banquet - London

A man and a woman are standing under a large, patterned umbrella in a rain room. The man is wearing a dark rain jacket and a hood, and the woman is wearing a dark jacket and a white scarf. They are both smiling and looking at each other. The room is filled with water falling from above, creating a misty atmosphere. Other people in rain gear are visible in the background.

An immersive Halloween Banquet, in a man made rain room

David Lloyd's Good Plates - London

Pop-up Restaurant focusing on social dining



Luna Cinema - Multiple Locations



Creation of themed elements for Luna Cinema, including screen surrounds, archways, giant lettering & sponsor decorations

Luna Cinema x Birra Moretti Bar - Multiple Locations



Multiple themed bars built to tour across the UK

Awaken the Tales - Old Town Al Ula, KSA



A multi-room escape experience, teaching tales from the history of the historic town it was built in

Awaken the Tales - Old Town Al Ula, KSA



A multi-room escape experience, teaching tales from the history of the historic town it was built in



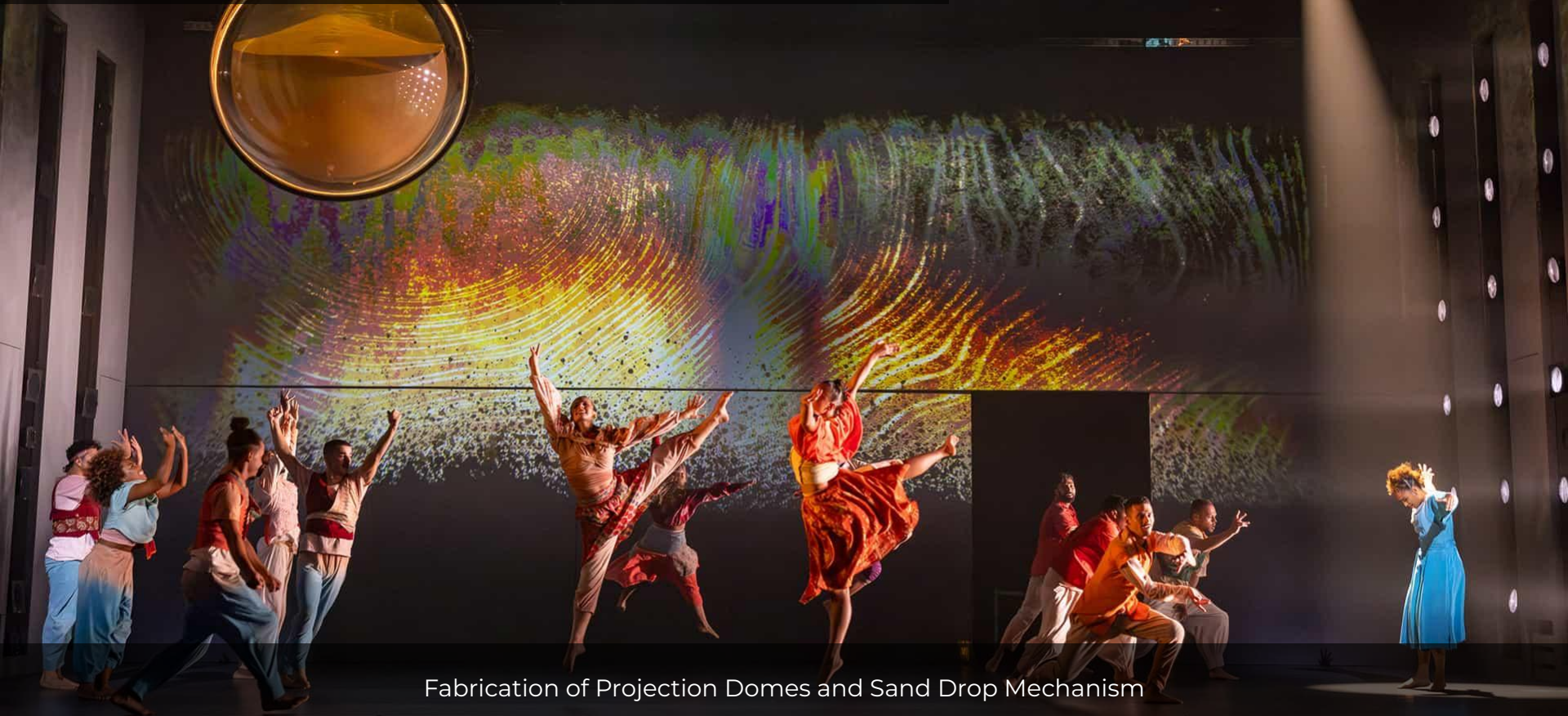
THEATRE PRODUCTIONS

Terrible is the Temptation - Sadlers Wells



Set Build and Installation

Message in a Bottle - Sadlers Wells



Fabrication of Projection Domes and Sand Drop Mechanism

Calendar Girls - Sadlers Wells



Fabrication of splitting giant cracker

Baddies - The Unicorn Theatre



Set build and Installation

The image depicts the interior of an ancient Greek temple, likely the Temple of Apollo at Delphi. The scene is dimly lit, with a warm, golden-brown glow emanating from the stone surfaces. In the center, a large, rectangular stone altar stands on a raised platform. The altar is intricately carved with a circular medallion at the top, featuring a sunburst or floral motif. Below the medallion, there are several lines of ancient Greek inscriptions. The altar is flanked by tall, fluted columns. In the background, a series of arched niches are visible, each containing a small, dark figure. The floor is dark, and a faint, glowing red line is visible in the lower right corner, suggesting a modern architectural or lighting element. The overall atmosphere is mysterious and historical.

MINI GOLF

Swingers - London



Fabrication and Installation of multiple mechanical elements

A museum exhibit featuring ancient Greek columns and a stone tablet with inscriptions, overlaid with the text "INTERACTIVE TECHNOLOGY". The scene is dimly lit, with a warm, golden glow emanating from a central point, possibly a light source or a digital display. The stone tablet in the center has several lines of ancient Greek text, including "ΠΕΔΗ ΓΕΙΑ" and "ΗΤΟΥ ΑΡΧΙΜΗΔΟΥΣ". The overall atmosphere is one of historical significance and modern technological integration.

INTERACTIVE TECHNOLOGY

Jonassist App Development - Phantom Peak



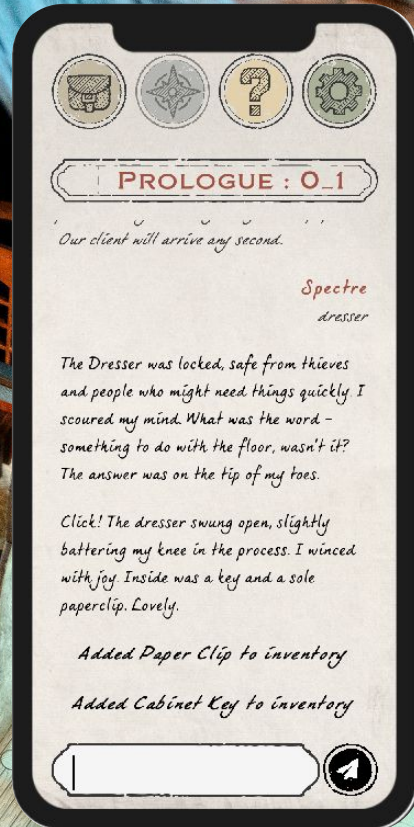
Custom web-app that powers Phantom Peak, with over 80k users-to-date

Custom Escape Room Digital Games



Custom Digital Game elements integrated into various Escape rooms

Spectre & Vox Digital App



Custom app to power technology-based Kickstarter game



DESIGN, BUILD

&

**PRODUCTION
CAPABILITIES**

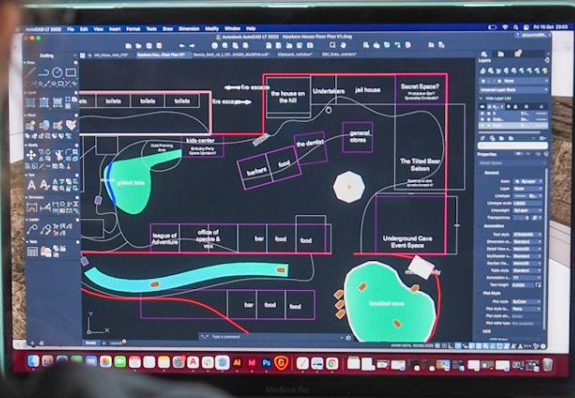
Story, Content and Puzzle Creation



TANDEM
SET & SERVICE

In-house team of writers, puzzle designers and content creators who design award-winning experiences for clients

Concept & Design



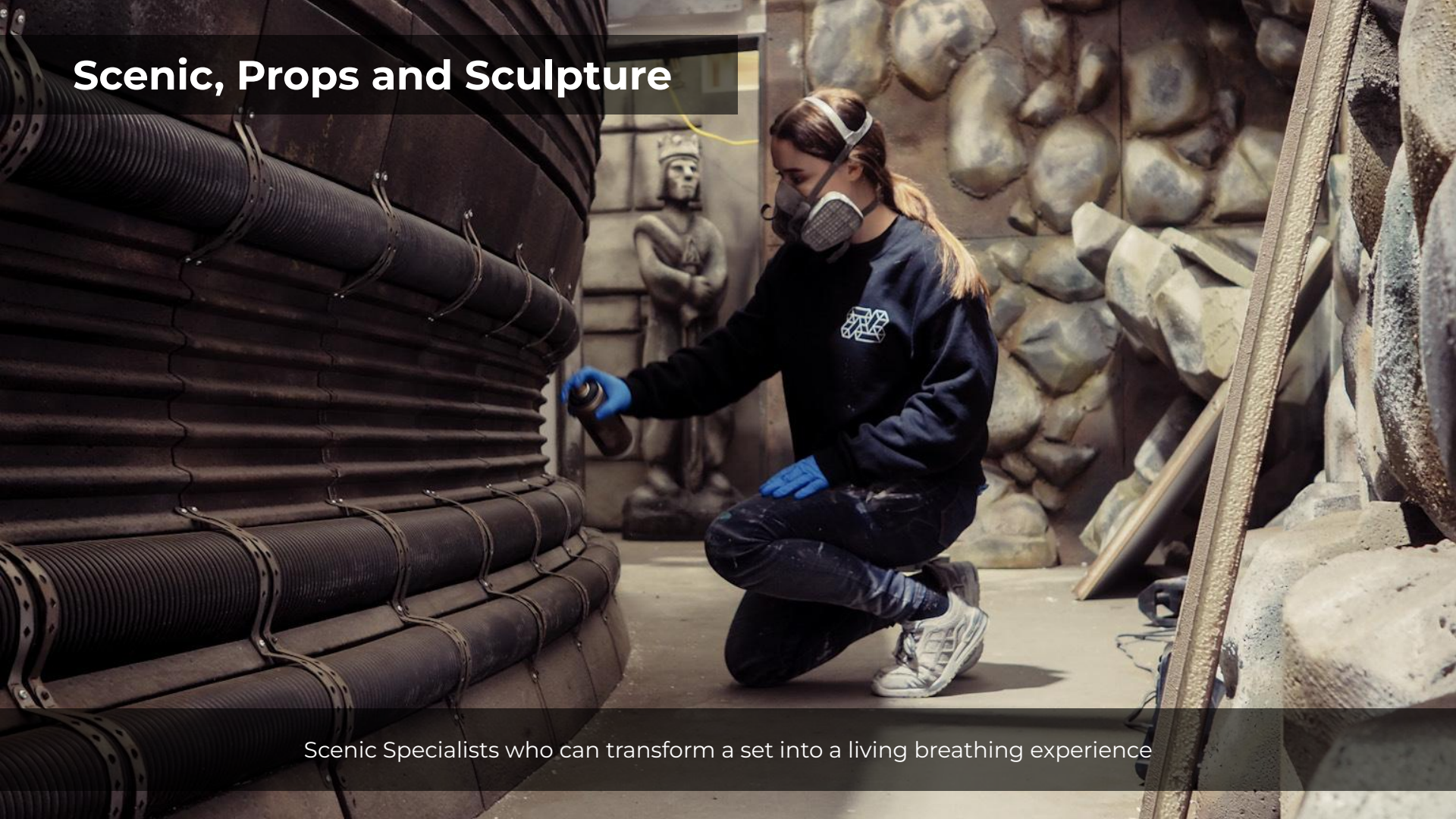
A design team with a knowledge base which spans multiple disciplines, from venue floor plans, immersive and experiential sets to Engineering large mechanical props and advanced technological inputs & outputs

Fabrication



Carpenters, CNC Operators and Metal Workers with years of experience working in Set Fabrication and Events, allowing for quick and efficient construction.

Scenic, Props and Sculpture



Scenic Specialists who can transform a set into a living breathing experience

Electronics and Digital Development



Team of Digital Developers for Game, App and Interactive elements across our productions



DESIGN, BUILD


&

**PRODUCTION
CAPABILITIES**

The background image shows a dimly lit, ancient interior, likely a temple or a museum exhibit. It features several large, dark stone columns supporting a ceiling. In the center, there is a prominent, ornate stone structure, possibly an altar or a large vase, with intricate carvings and a glowing circular emblem at the top. The walls are covered in relief sculptures. The lighting is dramatic, with strong highlights and deep shadows, creating a sense of mystery and history. The floor is dark, and there are some faint, glowing lines on it, possibly representing a grid or a path.

OUR TEAM

Tandem Team



Management

Glen Hughes - Director & Managing Director

Leah Morgan - Director & Creative Designer

Nick Moran - Director & Creative Director

Chad Griffiths - Technical Manager

Jordan Oliver - Senior Designer & Production Manager

Eleanor Robson - Senior Designer & Production Manager

Abi Kitchenham - Office Manager

Design & Development

Jack Payne-Johns - Designer

Danny Romeo - Game Designer & Writer

Tibet Boyer - Game Designer & Writer

Louis Barton - Digital Development

Henrique Lazaro - Digital Development

Fabrication

Dom Sporle - Lead Carpenter

Dave Yems - Carpenter

Peter Bell - Fabricator

Scenic Department

Amber Butler - Head Scenic

Aaron Holliday - Sculptor

Meg McHugh - Scenic, Props & 3D Fabrication

Get In Touch

Email: enquiries@tandemsetandscenery.com

T: 01892 263717 **Instagram:** @tandemset